

May 2022

# taylor lewis Magazine

## Exeter Living

CELEBRATING THE BEST OF THE CITY – IN PRINT, IN PERSON AND ON SOCIAL

**THIS IS  
UBERGLAM!**



#ExeterLivingAwards

AND THE WINNER IS...  
**EXETER**

Highly Commended Awarded at Exeter Living Awards



## Notes from the Managing Director

February 2022 marked a year of ownership for me and Business Partner Anthony Bassett, and what a year it has been! We continue to go from strength to strength with a series of appointments and promotions at senior levels within the organisation. Some of these appointments/promotions are:



**Chris Moore, Associate Director**, continues to show strong leadership of our Surveying Teams and we continue to be successful in winning new work and being re-appointed to our key clients' consultant frameworks.

**Martin Hobbs, Director and Head of Retrofit**, has joined the Taylor Lewis family and is spearheading the Retrofit Department across the Southwest. Martin's team continues to grow, and we are very excited to be helping our clients, old and new, with their decarbonisation agendas.

**Julian Phillips, Business Development Director**, who joined us last year, has made a fantastic impact at Taylor Lewis particularly in developing relationships with new clients. Jules and his team are focused on advertising the wealth of services and skills that Taylor Lewis has to offer.

In addition to the above, we continue to recruit at all levels to meet the growing needs of our clients across our working areas. To that end, we are in the process of opening offices in Plymouth and Bristol to support the Surveyors who are already operating in those areas, adding to our already successful Truro, Exeter and Newport offices.

Finally, this year marks a special birthday for Taylor Lewis as we turn 30 years old! We are looking forward to celebrating with our clients later in the year!

Here's to another 30 years!

## Bancombe Road development continues to take shape

**BLOOR HOMES**

**Abri**  
Homes

Abri Group has joined forces with Bloor Homes to deliver 46 homes for the local community. The first 6 homes in the development have now been handed over. Evidence of an extensive Roman rural settlement believed to date back as far as the 1<sup>st</sup> Century AD was discovered on the site of the new development on land north of Bancombe Road. The findings were excavated and studied by experts at Cotswold Archaeology. Among the artefacts uncovered were an iron blacksmith's hammer, iron cleaver, large quantities of pottery, tweezers, brooches, coins and Kimmeridge shale bracelet fragments.



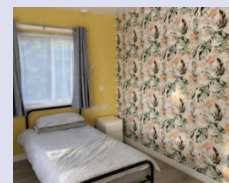
## Oak View Development



Working with Westward Housing and Developer Ryearch to deliver a total of 50 affordable properties in Bodmin with homes due to be released in April 2022.



## Little Cosgarne Renovation



Little Cosgarne, at its Cosgarne Hall site in St Austell, Cornwall has been providing housing and support to vulnerable people for around 30 years. The development underwent a complete transformation in 2021 thanks to funding from the Homelessness Winter Transformation Fund. It has been refurbished and adapted for wheelchair users, and residents with sight and hearing impairments.

We are delighted that this project has been recognised and shortlisted in the Constructing Excellence South West Residential Property of the Year Awards.

**HARBOUR HOUSING**



## New homes for St Columb



Working with Coastline Housing and ebc partnerships to bring two affordable homes projects to St Columb thanks to funding from Homes England. Project partners celebrated works getting underway with a socially distanced commemorative photo that saw Mayor Cllr Paul Wills and other local Town Councillors invited onto the site.



## Charity partners roundup



In January we were involved in the Hospiscare Christmas Tree Recycling initiative where Jules and H collected trees in exchange for a donation to Hospiscare. This mammoth recycling effort saw a whopping 1,200 trees collected together, and £16,000 was raised for Hospiscare.

Later this month 15 of the TL Team are doing a sponsored Skydive on 7 May for Hospiscare, please head to our fundraising page to find out more.

[www.justgiving.com/team/taylorlewisskydivechallenge](http://www.justgiving.com/team/taylorlewisskydivechallenge)

Walking in the sunshine and fresh air is a great way to give your own mental and physical health a boost, so taking part in the #MarchforMarch was important to us as well as raising vital funds for Combat Stress. Walking each lunchtime over the month of March these wonderful TL ladies totted up over 60 miles collectively and along with 1143 participants across the country who signed up to the challenge, we managed to raise over £90,000 to support veterans mental health treatment.



Well done to Martin and Jules for completing the #MensWalk2022 for Hospiscare.

## Cornish Development

Acting on the behalf of Coastline Housing, Taylor Lewis assisted with the delivery of a total of 33 units at Illogan, previously a green field site owned by the local church. This project was completed by ebc Partnerships and the scheme will provide essential housing for local people consisting of 10 shared ownership and 23 affordable rented properties, with 2 adapted properties. The scheme has now achieved the Building with Nature award that measures ecological enhancements, which has included the introduction of new Cornish hedges and additional native planting across the site.



HIGHLY COMMENDED

Exeter Living  
AWARDS 2022

## Shortlisted for the Exeter Living Awards

We were delighted to be shortlisted in the Civic Development and Property categories at the uber-glam Exeter Living Awards in March.

The Awards are the big event of the year; a time when Exeter's businesses, organisations and charities come together to celebrate the very best of Exeter. We were delighted to receive a Highly Commended Award in the Property category on such an inspiring night and it was a privilege to be a part of it.



## Retrofit Coordinator at Taylor Lewis

We are pleased to announce the arrival of Martin Hobbs into the TL family.

Martin is our lead Retrofit Coordinator, overseeing the assessment, monitoring and evaluation of energy efficiency measures within domestic properties in accordance with PAS 2035. He will manage all our retrofit projects from inception to implementation. Martin will also bolster our Cost Consultancy services to our existing clients. Martin is a great addition to the Taylor Lewis family with his equitable, dependable knowledge and with a proven track record of delivering a service of the highest standards.

## 30<sup>th</sup> Anniversary Celebrations

Due to the tremendous level of interest all 30 team spots allocated for the day have now been filled. We are really looking forward to celebrating with you in September.





# Collaborative working to deliver a housing project

The factory-built, energy-efficient, low-carbon, affordable homes were built offsite and designed in collaboration with Magna Housing to ensure a product-led mindset, championing high quality, energy efficiency, design flexibility and consumer choice.

Key to the success, of these relationships and projects, has been the involvement of the South West Procurement Alliance (SWPA), who were the procurement route for the existing relationship between Magna Housing, Rollalong and Taylor Lewis.



## Mental health in the workplace is more important than ever

We worked with K2 Associates UK Limited to provide Mental Health First Aid training to one of our employees in the Exeter office. The course provided a deep understanding of what mental health is and what factors can affect a person's wellbeing. Spotting the signs of mental illness and learning a vital life tool that listening to understand, rather than listening to respond, really does make for healthier and more productive conversations.



## 60 seconds with ... Matt Steggles

### Where were you born ?

I was born in the glorious Southend on sea!

### Tell us a little about your career path

My career has been less of a path and more of an off road adventure. My twenties were spent in the music industry carrying out various roles from Tour management to product management, DJing and playing Bass in a couple of decent bands. In my thirties I became an estate agent and did some property development with my father and brother in east London before moving to Devon to take up a role in construction recruitment. Throughout all of my property roles I always enjoyed the chats I had with building surveyors so I am currently completing a level 6 Diploma in residential surveying and valuation for my AssocRICS.



### Did you always want to work in construction?

I have always been around construction. My Dad and I built stables and barns and all sorts when I was young and construction work was always easy to get between gigs in my twenties. The property development I did was a hobby alongside working! I enjoy the problem solving and the combination of technical and creative elements that go to make a new home or office.

### Why did you want to join Taylor Lewis ?

Steve talked me into it. When I left my recruitment job he asked if I was interested in 3 months work on "Cavity barriers" I said yes without really knowing what it was and the rest is history!!

### If you could choose one other profession, what would it be?

My father was a solicitor so I have always fancied that.

### What is your favourite building?

This is a tough one as there are some great structures out there. but my all time favourite is the west pier at Brighton. Its almost all gone now but I enjoyed imagining it in its heyday with its grand architecture.

### What are you passionate about?

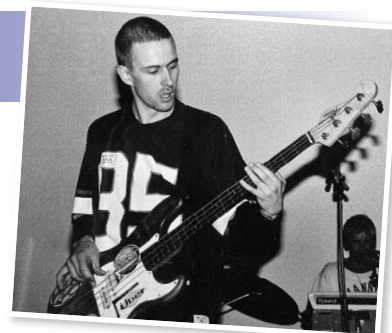
I love music, I always have! Playing, writing and recording. I wish I had more time to do it, but the cavity barriers are a cruel mistress!

### What's your favourite ride at a theme park?

I like the rollercoasters!

### What would your entrance theme song be?

Cochise by Audioslave



## We say goodbye to two of the best!.....

**Ben Couch** left Taylor Lewis at the end of February. Following the management buyout in early 2021 and after 12 successful years of leadership and ownership of Taylor Lewis, Ben has decided to take a step back from his role of Regional Director and provide some consultancy support to Taylor Lewis. We are really pleased to say that this is not a proper goodbye, but it does mark the end of a fantastic achievement in Ben's career.



Ben has been an essential fixture in our business since 2005, under his leadership Taylor Lewis experienced considerable growth and navigated significant changes and advancements. We wish him all the very best for his next chapter. It's not goodbye, it's see you later!

After nearly 14 years, **Pete Owens** retired from Taylor Lewis at the end of March.

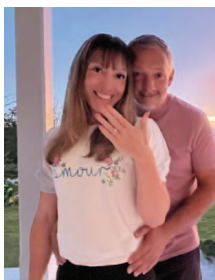
Pete's construction career began after some summer vacation work on building sites in Dublin and Harrow, these projects led Pete to the 'big smoke' to work as a Quantity Surveyor earning his way up the ranks to Commercial Manager and relocating to the South West for Midas Homes.



In 2008 Pete joined the Taylor Lewis family as a permanent fixture ensuring the high standards of quality that our clients have come to expect of us. Thank you Pete for your incredible contributions to our Team.

## Congratulations

Huge congratulations to Dani and Becky who got engaged in Cornwall last month and to H and Mike who got engaged in the Bahamas over Easter. We wish both couples all the very best for future health and happiness.



## Meet baby Lola

Dani and Becky have welcomed beautiful Lola Isobelle Atkins-Barr into the world.

Born in December weighing in at healthy 8lb 3oz. Everyone is doing brilliantly and they look forward to coming in soon for cuddles.



## New faces



**Martin Hobbs**  
Director



**Craig Smith**  
Senior Surveyor



**Dave Cooper**  
Technical Advisor



**Kilian Hall**  
Surveyor



**Dan Round**  
Associate

## Back in the office following maternity leave



**Abbie Turner**  
Project Administrator



**Exeter Office**  
1c The Venture Centre,  
Yeoford Way,  
Matford, Exeter  
Devon EX2 8LB

Tel: 01392 825778

**Truro Office**  
Princess Chula House  
City Road  
Truro  
TR1 2JL

Tel: 01872 279589

**Newport Office**  
Merlin House  
Langstone Business Park  
Newport  
NP18 2HJ

Tel: 01633 415322

**INVESTORS IN PEOPLE®**  
We invest in people Standard

**CONSTRUCTING EXCELLENCE**  
South West Member 2020/21

**RICS®**

**EXOR**  
APPROVED

**SelfContractor**  
APPROVED



**SSIP**

SAFETY  
SCHEMES IN  
PROCUREMENT



**Building Excellence**  
**AWARDS 2020**  
Regional Winner

**ExeterLiving**  
**AWARDS 2022**  
HIGHLY COMMENDED

**Employers Agent**  
Project Management  
**Chartered Quantity Surveyors**  
CDM/Principal Designer  
**Sustainability Advice**  
Building Surveyors  
**Passive Fire Inspectors**  
Land Assembly  
**Retrofit Assessors / Coordinators**  
[www.taylorlewis.co.uk](http://www.taylorlewis.co.uk)